



NEW ARRANGEMENTS FOR SUPPORTING CHILDREN AND YOUNG PEOPLE WITH SPECIAL EDUCATIONAL NEEDS AND DISABILITIES

January 2022

Dear Parent / Carer

Welsh Government is changing the way that children and young people with Special Educational Needs (SEN) will be supported. The new system defines SEN as Additional Learning Needs (ALN). The law is changing for several reasons, but the main one is to make the process simpler and more transparent for all involved. These changes mean that children and parent(s)/ carer(s) and young people will:

- access the support they need earlier;
- be more involved in making decisions about the support they need;
- be able to find information more easily;
- be supported if they disagree with decisions.

How will this happen?

From September 1st, 2021 the Additional Learning Needs ('ALN') system set out in the Act will be fully implemented over the school years 2021/22, 2022/23 and 2023/24. Local Authorities, Schools and Pupil Referral Units ('PRUs') will move children who fall into mandated years, from the existing Special Educational Needs ('SEN') system to the ALN system during a three-year implementation period as follows:

- Spring and Summer terms, school year 2021/22: Nursery 1, Nursery 2, Year 1, Year 3, Year 5, **Year 7 and Year 10 (at St Richard Gwyn).**
- School year 2022-23: Nursery 1, Nursery 2, Year 1, Year 5, **Year 9 and Year 10 (at St Richard Gwyn).**
- School year 2023-24: Year 4 and **Year 8 (at St Richard Gwyn)** and any other pupils with SEN on 1 January 2022 who did not move to the ALN system during years one and two of implementation.

From 1st January 2022, the ALN system will begin for children who attend maintained schools (including PRU's), are in the school years highlighted above and have special educational provision via early years action / early years action plus or school action / school action plus, and in the school years highlighted above.



St Richard Gwyn Catholic High School

Flint, Flintshire. CH6 5JZ

T: 01352 736900

F: 01352 731895

www.strichardgwynflint.co.uk

srgadmin@strichardgwyn.flintshire.sch.uk

Ms C. McCormack Headteacher

The ALN system will follow the person-centered approach and schools, PRUs and in some cases local authorities will make a decision about how best to meet your child's needs within the meaning of the new Act.

Following a collaborative decision making process, schools, PRUs or sometimes the local authorities will issue an 'IDP notice' or a 'no IDP notice'. It is the IDP notice, or the no IDP notice, that moves a child from the SEN system to the ALN system.

What happens now?

We will work hard with your child and yourselves to ensure everyone understands these changes. If your child is in one of the pupils that will move to the new Additional Learning Needs ('ALN') system starting in January 2022 and phased in gradually over the Spring and Summer Term 2022 we will get in touch with you and provide you with information on when and how this will happen.

At any point during the three year implementation period, from 1 January 2022, you or your child can ask to move to the new ALN system earlier than the local authority, school or PRU had planned. This can be done by asking for an IDP notice to be issued.

Families will have access to impartial information advice and support. This is statutory, which means it must be provided by law.

Every local authority in Wales must have arrangements for providing children and their families and young people with impartial information, advice and support. In this local authority SNAP Cymru (0808 801 0608) provides this service.

Please also be assured, that we or the local authority can also provide any advice or support as necessary. Speak to us as soon as you have any worries or concerns.

Yours sincerely,

S. Dowd

(Mrs Sharon Dowd – ALNCo)



Additional Learning Needs

An information guide for Parents and Carers.

Introduction

The system for supporting children and young people who have Special Educational Needs has now started to change. The change will take place over a period of three years and the term Special Educational Needs will be replaced with the term Additional Learning Needs (ALN). It will also replace the term Learning Difficulties and Disabilities (LDD). As part of these changes, there will be an emphasis on high aspirations and improved outcomes for all children and young people who have ALN.

For the majority of children and young people, their needs can be met through high quality teaching and learning. All education settings should put in place differentiated teaching or other targeted support to help pupils make progress, where appropriate. A small number of children and young people, however, will have ALN, which requires Additional Learning Provision (ALP). ALP is additional to or different from educational or training provision, which is generally available for all. Explaining how we meet your child's needs is known as the graduated response.

What does it all mean?

From September 2021, the term Additional Learning Needs replaced the term Special Educational Needs, and it will encompass children and young people aged 0-25 who have needs that require ALP.

A person has additional learning needs if he or she has a learning difficulty or disability (whether the learning difficulty or disability arises from a medical condition or otherwise) which calls for additional learning provision.



It is important to remember that children and young people learn in different ways, and their needs may change over time. Through a continuous cycle of identifying needs and sharing information, planning, taking action and reviewing progress, different support can be identified and provided as necessary.

The support could be increased, reduced or changed over time according to your child's individual progress. This means that earlier decisions and actions are revisited, refined and revised to help achieve a growing understanding of your child. It also supports them in making progress and helps them to realise their hopes and aspirations.

Early Years

Should it be determined that a child who is not yet of compulsory school age has ALN, the Local Authority are responsible for securing the ALP and writing their Individual Development Plan (IDP). The Local Authority has an Early Years Additional Learning Needs Lead Officer who can be contacted for advice and support.

School Age Pupils

For children who are of compulsory school age, the class teacher or Additional Learning Needs Coordinator is the first point of contact. They will be able to listen to your concerns, and if requested, begin to consider if your child has Additional Learning Needs. This decision will be made within 35 working days, unless the school requires further specialist assessment through the Local Authority or Health Services, in which case a further 12 weeks may be required.



Further Education Institutions

Young people accessing FEI who have an ALN will have their needs identified through the FEI provider in the first instance. In a small amount of highly complex cases, the FEI may refer a young person (with their consent) to the Local Authority for further advice and support.

Universal Provision

Universal Provision is the name given to the provision, which is routinely available to all children and young people and may be provided at a whole class, small group or individual level. It is monitored and tracked in line with school procedures and could be a short or longer term provision.



Additional Learning Provision

If a child or young person does not appear to be making progress, then ALP may be required. This will involve the needs of the pupil being identified in a person-centred way and could lead to enhanced and alternative provision being provided to support the pupil in making progress. Children and young people who access ALP are classed as having ALN and as such will require an IDP.

Individual Development Plan

An Individual Development Plan, or IDP, replaces Statements of Special Educational Needs and in some cases Individual Education Plans. These plans will be person-centred and may include multi-agencies, ensuring that the child or young person is at the centre of planning their provision.

IDPs will be phased in over the next three years following the Welsh Government timetable, as the Statements and Individual Education Plans used currently are reviewed. Plans will be reviewed at least annually and will be created with the child or young person and their parents/carers or advocate. They can also be reviewed should information or needs change at the request of the child, young person or parent/carer.

These IDPs are designed to outline the ALN of a child or young person, their aspirations and targets to achieve these. Any child or young person who receives ALP requires an IDP. The majority of these IDPs will be written and maintained by schools, in some more complex cases, however, schools may request that the Local Authority consider the needs of the child or young person. If these needs are found to be complex and require specialist input, the Local Authority may write and then either direct the school to maintain the plan or maintain it themselves.

Parents and young people can request to have certain decisions they disagree with reconsidered:

1. to reconsider whether a child has ALN or not;
2. to reconsider a school IDP with a view to revising it;
3. to decide whether the Local Authority should take over responsibility for maintaining an IDP;
4. to reconsider a school's decision to cease to maintain an IDP.



Children who are not of compulsory school age and do not attend an LA-maintained school, who have ALN and require an IDP will have this written and maintained by the Local Authority, through the Early Years Additional Learning Needs Lead Officer.

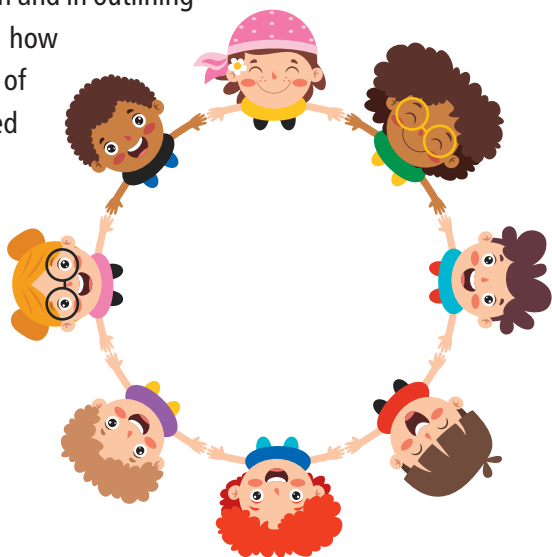
In cases of post-16 ALN, the post-16 provider will write and maintain the IDP in the majority of cases, referring to the Local Authority only in cases of complex or multiple ALN. This would only happen when it would not be reasonable for the post-16 provider to secure the provision. The Local Authority is responsible for writing and maintaining IDPs for those home-educated pupils, looked after children (LAC), and dual-registered pupils who are identified as having ALN.

Person-centred Approaches

Person-Centred Approaches are central to the Additional Learning Needs and Educational Tribunal Act and Additional Learning Needs Code for Wales. They are all about putting the child or young person at the centre of identifying their needs, planning their provision and reviewing this.

Ensuring that children and young people are involved in identifying what is important to and for them, in planning their provision and in outlining their hopes and aspirations, explaining how they wish to realise these are all part of an overarching ethos to person-centred practice.

Reviews of IDPs should take place in a person-centred way and your child's school can provide information or answer any questions you may have regarding this.



What to do if you're not happy with a decision

If you are not happy with the decision of a school regarding the consideration of ALN, you can ask for the Local Authority to reconsider this decision. Prior to this, we would recommend that you discuss your concerns with your child's school. After discussion, if you remain dissatisfied, you can contact the Local Authority to request a reconsideration by emailing the following address: ALN@flintshire.gov.uk.

The reconsideration period can take up to seven weeks. During a reconsideration, the Local Authority will review the information the school used to make their decision and can determine that they agree with the school decision or that they disagree with this. Should the Local Authority disagree, they could direct the school to either write and maintain an IDP for the child or young person or to amend the current version.

If you are not happy with the decision of the Local Authority regarding ALN, you have the right to appeal to the Educational Tribunal (Wales). Any appeals must be made by the first working day within eight weeks of the decision of the Local Authority. If the dispute resolution services noted below are used, the time scale for appeal is extended by a further eight weeks.

You can find out more about the Educational Tribunal (Wales) by visiting the following website: <https://specialeducationalneedstribunal.gov.wales/>

Dispute resolution

If you want independent advice, guidance and support you can contact the Additional Learning Needs Information and Support Service, which is provided by SNAP Cymru. SNAP Cymru can be contacted in one of the following ways:



Online Contact: <https://www.snapcymru.org/contact>

Telephone: 0845 120 3730

From mobile: 0345 120 3730

A Disagreement Resolution Service is also available, which is provided by SNAP Cymru. You can get information from your designated co-ordinator or by contacting SNAP Cymru directly: DRS@snapcymru.org.



Education Services

County Hall
Raikes Lane
Mold
CH7 6NB

ALN@flintshire.gov.uk
01352 752121